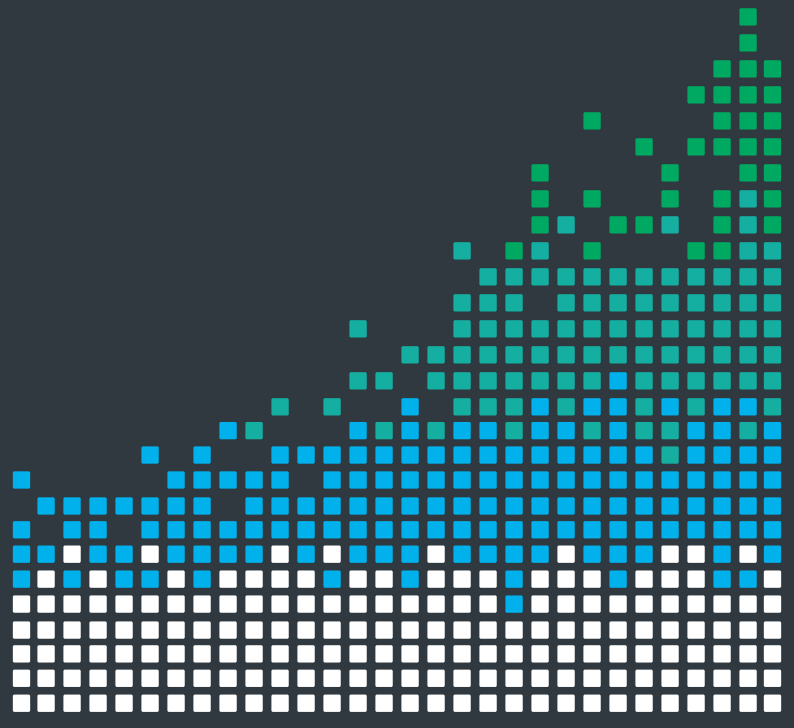


PLAY FOOTBALL WITH THE

# :MOVE Mini BUMPER ADD-ON

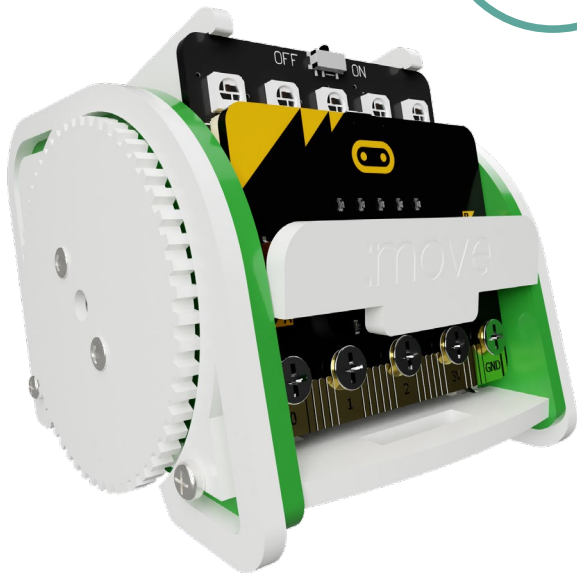
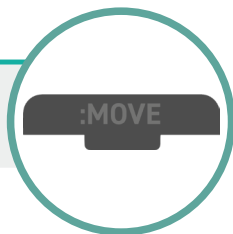


## BUILD INSTRUCTIONS

**NOTE:** These instructions have been written for the original :MOVE mini. For :MOVE mini Mk2 bumper instructions, visit [kitronik.co.uk/5658-mk2](http://kitronik.co.uk/5658-mk2).

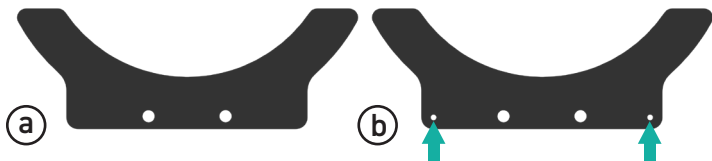
1

First, remove the lasercut panel from the front of the :MOVE mini.



2

Using the screws provided, screw the two panels either side of the :MOVE mini baseplate. The screws should pass through the rectangular cut-out.



**NOTE:** The screws self tap into the holes on the lower panel.



### TOOLS REQUIRED

- Small Phillips Screwdriver



### STOCK CODE

5652



**WARNING** : Contents may inspire creativity

---

T: 0845 8380781



---

W: [www.kitronik.co.uk](http://www.kitronik.co.uk)

---

E: [support@kitronik.co.uk](mailto:support@kitronik.co.uk)

---

 Designed & manufactured  
in the UK by 



[kitronik.co.uk/twitter](https://www.kitronik.co.uk/twitter)



[kitronik.co.uk/facebook](https://www.kitronik.co.uk/facebook)



[kitronik.co.uk/youtube](https://www.kitronik.co.uk/youtube)



[kitronik.co.uk/google](https://www.kitronik.co.uk/google)



For more information on RoHS and CE please visit [kitronik.co.uk/rohs-ce](http://kitronik.co.uk/rohs-ce). Children assembling this product should be supervised by a competent adult. The product contains small parts so should be kept out of reach of children under 3 years old.